

04/24

mono Lake

#2

Thinking about the Mono Lake ecosystem:

1. Name 1 example of a community. How do the populations interact?
2. Identify 1 example of organisms interacting with abiotic factors in Mono Lake.



Figure 1



Learning target

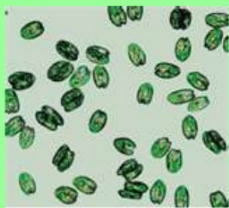
I can identify complex feeding relationships in the Mono Lake ecosystem.

04/24

mono Lake

#2

What is the relationship between the Algae and the brine shrimp?



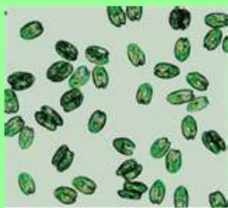
I can identify complex feeding relationships in the Mono Lake ecosystem.

04/24

mono Lake

#2

What is the relationship between the Algae and the brine shrimp and brine flies?



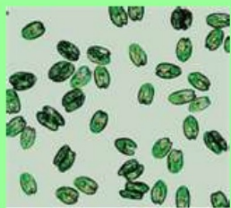
I can identify complex feeding relationships in the Mono Lake ecosystem.

04/24

mono Lake

#2

What is the relationship between the gull and the Brine Shrimp and the algae?

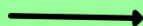
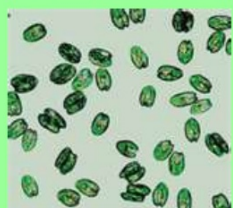


I can identify complex feeding relationships in the Mono Lake ecosystem.

04/24

mono Lake

#2



Food Chain: The path showing energy transfer from one organism to another.



I can identify complex feeding relationships in the Mono Lake ecosystem.

04/24

mono Lake

#2

Make 1 food chain with more than 3 organisms.

(chemical).

Food Chain: The path that food energy takes from one organism to another.



I can identify complex feeding relationships in the Mono Lake ecosystem.

04/24

mono Lake

#2



Food Web: A diagram that shows all the feeding relationships (food energy transfers) in an ecosystem.



I can identify complex feeding relationships in the Mono Lake ecosystem.

04/24

mono Lake

#2



Use the cards and arrows to show as many feeding relationships (food energy transfers) as you can.

Each organism must have an arrow showing what it eats and what eats it!

Energy



I can identify complex feeding relationships in the Mono Lake ecosystem.

04/24

mono Lake

#2

To make Mono Lake water in your classroom, mix into one quart of freshwater:

2.5-Tb table salt (chloride)

4.5-Tb baking soda (carbonate)

2 tsp. Epsom salts (sulfate)

a pinch of borax

a pinch of detergent



I can identify complex feeding relationships in the Mono Lake ecosystem.

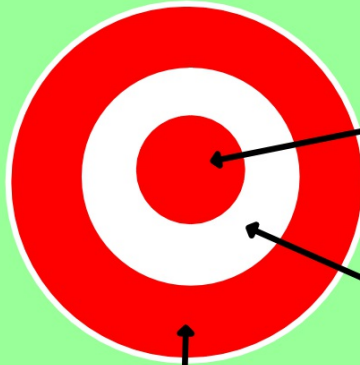
04/24

mono Lake

#2



How well do you think you have reached the learning target for today?



Bullseye! Got it.

Almost. Need some practice

Got a way to go yet



I can identify complex feeding relationships in the Mono Lake ecosystem.

