

In your journal:

1. Report any variables from the speed investigation that you did not control and how they might have affected your results.
2. What would you do differently next time to make your investigation more valid and your data more reliable?
3. I wonder.. what are your next questions?





Figure 1



I can analyse data to describe the speeds of moving objects.

Four friends met at the park to run their boats. They decided to find out how fast each boat could go. They collected the distance and time data shown in the table.

Boat	Δt (s)	d (m)
Mango	90	150
Perky 	100	100
Whisper 	30	150
Tornado	60	120

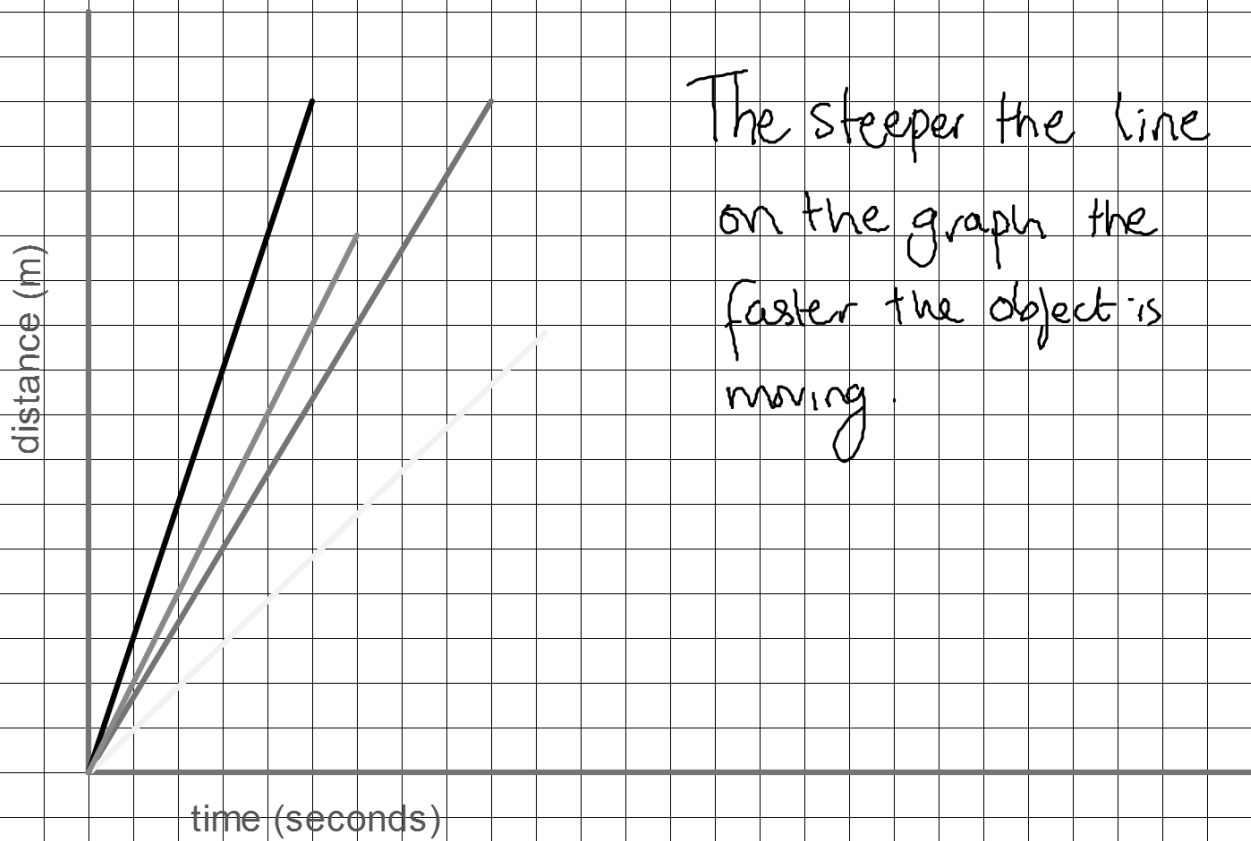
Graph the data. **Time on the x axis and distance on the y axis.**

Each boat should be a different color and you will need a key.



I can analyse data to describe the speeds of moving objects .

Boat speeds distance v time



The steeper the line
on the graph the
faster the object is
moving.