

11/29

Erosion Investigation

#7

Agenda

- graph the data
- write a conclusion
- Continue to type the investigation

Graph your group data and the average class data. You will need a key!

Check the rubric and yellow sheet for graph requirements.

Exit goal

Finish typing up the investigation

This should be your **best work!**

Learning

Target:

I can graph my data and use the data to write a conclusion.

11/29

Erosion Investigation

#7

Agenda

- graph the data
- write a conclusion
- Continue to type the investigation

Exit goal

Finish typing up the investigation

Have your graph
paper portrait style
and write a good title!

Check the rubric and yellow sheet
for graph requirements.

This should be your **best work!**

Learning

Target:

I can graph my data and use the data to write a conclusion.

Write your conclusion for the average class data!

Conclusion

My hypothesis was correct. If the time of weathering is increased then the mass of sediment will increase and the mass of the source rock will decrease. At 0.0 min the source rock had an average weight of 26.6g while the sediment had an average weight of 0.0 grams. After 10 min the source rock was an average of 26 grams while the sediment had an average of 1.6 grams. The source rock at 10 min is 0.6 grams greater than it was at 0.0 min. The sediment at 10 min is 1.6 grams greater than the sediment at 0.0 min.

ing

et I can graph my data and use the data to write a conclusion

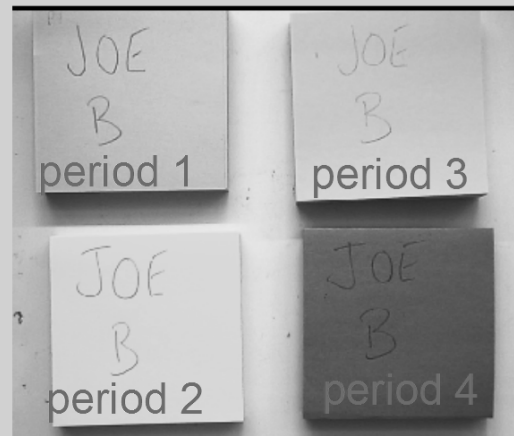
Exit task

Put your first name and last initial on the sticky note:

Place the sticky in the column of your choice

I can use data to write a conclusion:

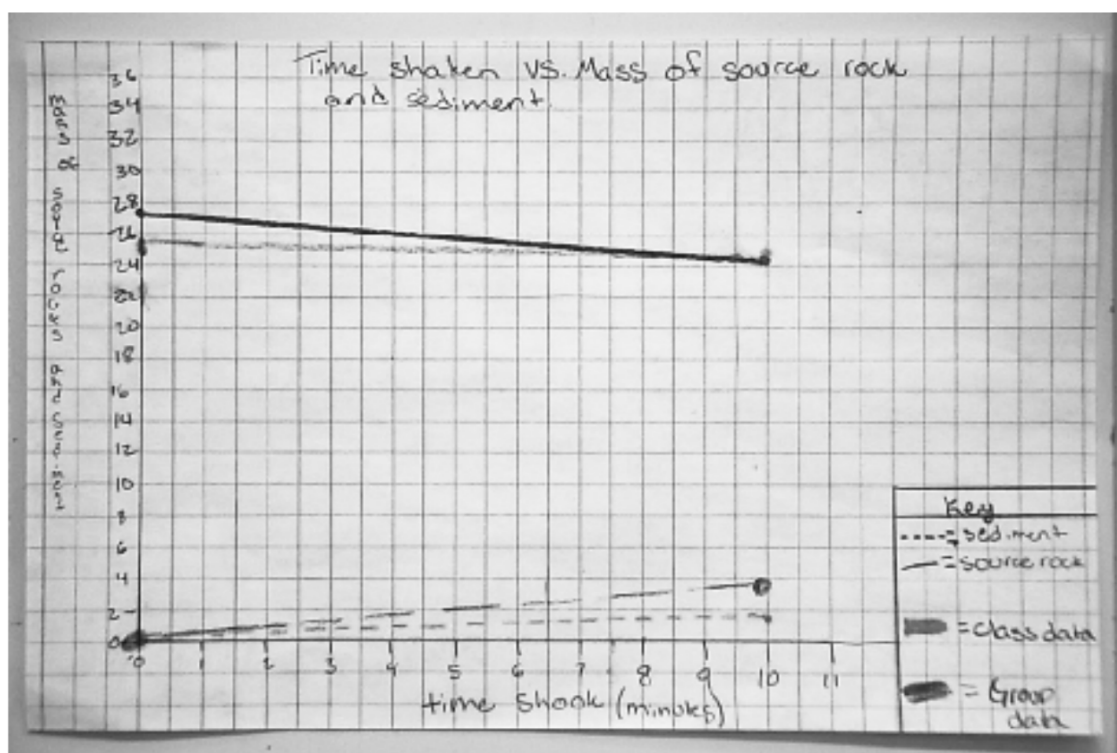
- I don't get it
- I can sort of do it
- I understand how to do this
- I can teach it



ing

et I can graph my data and use the data to write a conclusion

Period 4 group 4



Weathering time V.S mass of sediment and mass of rock

