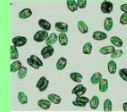


1. How does energy enter the Mono Lake ecosystem?

2. Do migrating birds bring energy into the ecosystem or take energy out?



3. Algae manufacture food. What happens to the food made by the algae?



4. What happens to the energy in the algae eaten by the brine shrimp?



Learning target:

I can understand how energy moves through trophic levels.

Frog Pond Ecosystem Study



Make a new folder in the science folder titled FROG POND. this is where you will save your documents for this project.

Today's Goals:

- 1. Type the introduction (must finish)*
- 2. Type the three observations.*
- 3. Find some back ground information about the organisms we have seen at the pond.*



Learning target: I can demonstrate my understanding of energy in an ecosystem and the complex interactions that occur through an analysis of the frog Pond Ecosystem.

Frog Pond Ecosystem Study



Introduction

Write 1-3 paragraphs introducing your ecosystem.

Give a general description of your ecosystem including name and location. Define the specific boundaries of the ecosystem. Identify the major organisms, populations, communities, and abiotic factors in the ecosystem.

Describe any evidence of human impacts in the ecosystem.



Learning target: I can demonstrate my understanding of energy in an ecosystem and the complex interactions that occur through an analysis of the frog Pond Ecosystem.

