

03/27 Producers #3

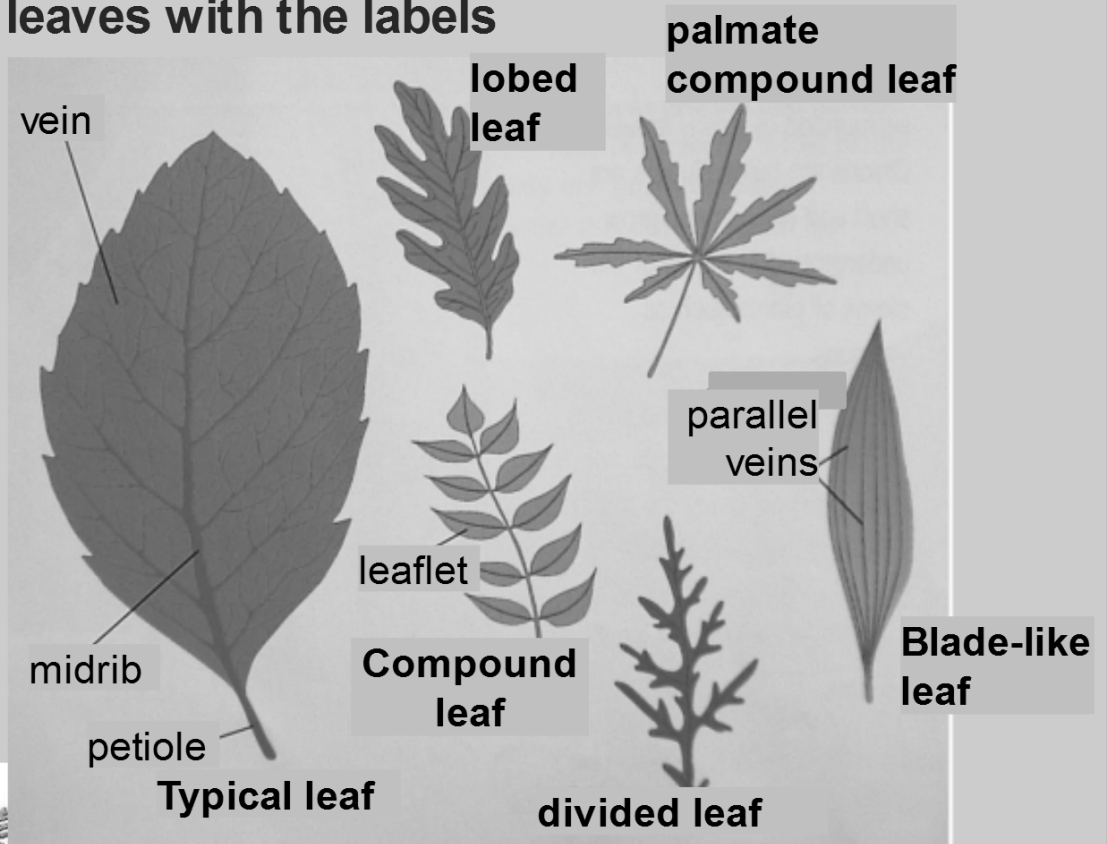
Plan

- Plant diagrams
- Silent frog pond observation

Exit goal

Create a plant diagram.

Copy leaves with the labels



I can make detailed observations of plants and show the detail in an accurate drawing. I can identify common Washington plants.

Data Tables

Control (sun, water, & soil)

No _____

Date	Average Height (cm)	Observations (Color, strength, shape, leaf size and number...)

Date	Average Height (cm)	Observations (Color, strength, shape, leaf size and number...)

What stage is your radish plant in?



I can investigate what producers need to make their own
Learning target: food by planning a controlled investigation.

03/27 Producers

#3

Science Projects

Progress...

Questions...



I can make detailed observations of plants and show the
Learning target: detail in an accurate drawing..

03/27 Producers

#3

Field Study Notes #1 03/27/2012

Name of Ecosystem: Pond Ecosystem

Boundaries:

Abiotic Factors:

Biotic Factors:

What do you wonder about? What do you notice?

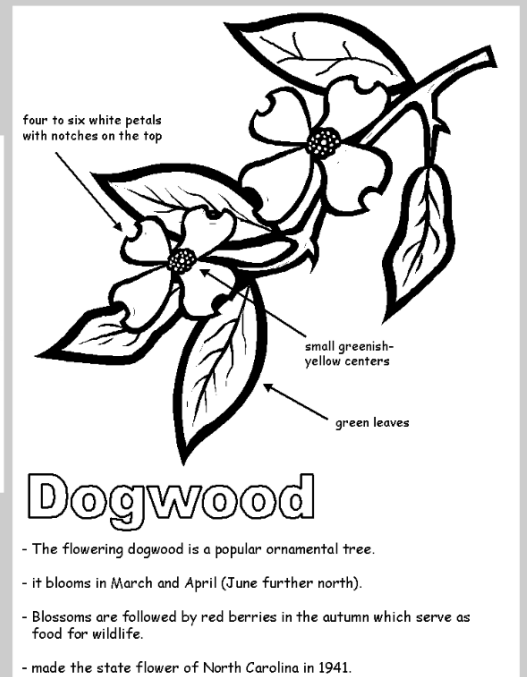
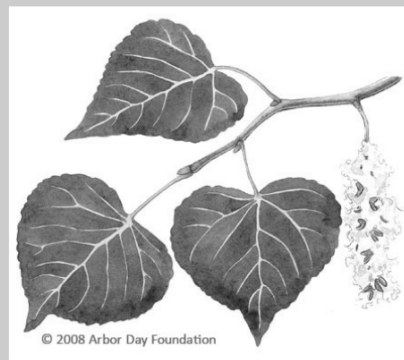
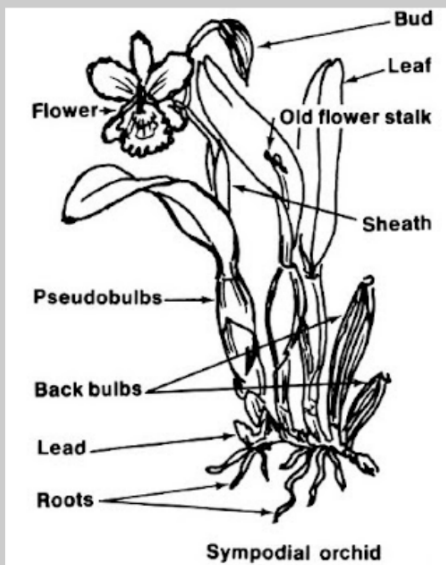
* I wonder what happened to the frog?



Learning target: I can make detailed observations of plants and show the detail in an accurate drawing..

Plant Diagrams

1. ABCD (with labels)
2. Include the scientific and common plant name as a title.
3. Include measurements

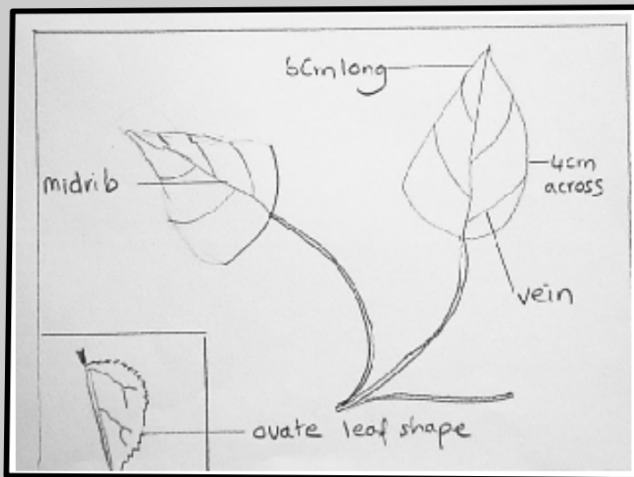


Learning 1 I can make detailed observations of plants and show the detail in an accurate drawing. I can identify common Washington plants.

03/27 Producers

#3

Plant You will be given 1 plant sample to draw.
Diagrams



1. Draw your sample accurately.
2. label features
3. label the size
4. Find its name

Take a whole page and draw in a box. ABCD



Learning target: the detail in an accurate drawing. It can make detailed observations of plants and show



douglas fir oregon grape hemlock salal blackberry scotch broom sword fern cedar

Learning I can make detailed observations of plants and show the
target: detail in an accurate drawing.

Today you are going to begin to make a field notes page beginning with a rough draft in your journals.

1. You will be given an identified plant sample.
2. Set up a page in your journal
3. record the name of your plant
4. Go and find the plant
5. Describe the habitat.
6. describe the plant as a whole



Learning target:

I can make detailed observations of plants and show the detail in an accurate drawing.

Organism Field Notes Rubric

Each organism		
Name	Include the Latin and the common name. Include also its place in the food web.(producer/consumer)	1
Habitat	Describe the habitat where the organism is found. describe the abiotic and biotic factors in the area your species was found	2
Description	Brief description of the organism including but not restricted to, size, color, leaf description, whole plant/animal description. include measurements.	3
Drawing	Accurate, detailed, labeled drawing of the organism. (you may label a pressed sample of a producer)	3
Interesting fact	Research and write in your own words one interesting fact.	1
	Total	10



Learning target:

I can make detailed observations of plants and show the detail in an accurate drawing.